

# Actual

## Art-Lift



### Installation Manual

## Index

<b>1.</b>	<b><i>Preparation</i></b>	<b>3</b>
1.1	Required tools	3
1.2	Required parts	4
<b>2.</b>	<b><i>Mounting upper profile</i></b>	<b>5</b>
2.1	Mounting brackets	5
2.2	Mounting upper profile	5
<b>3.</b>	<b><i>Mounting actuator</i></b>	<b>6</b>
<b>4.</b>	<b><i>Mounting under profile</i></b>	<b>7</b>
<b>5.</b>	<b><i>Mounting platform</i></b>	<b>8</b>
5.1	Mounting platform bar	8
5.2	Mounting platform	8
5.3	Adjusting platform	8
<b>6.</b>	<b><i>Mounting other parts</i></b>	<b>9</b>
6.1	Mount locking	9
<b>7.</b>	<b><i>Electrical connection</i></b>	<b>10</b>
7.1	Wiring diagram Art-Lift—Power source	10
7.2	Wiring diagram Art-Lift PCB	11
<b>8.</b>	<b><i>Adjusting Art-Lift</i></b>	<b>12</b>

# 1 Preparation

When mounting the Art-lift in the van, you will need the parts and tools needed as described in this chapter. Before the installation, you should check that the correct parts and tools are present.

Depending on the brand and type vans, there are several mounting brackets available. These brackets need to be mounted to the partition of the van, in the manner described in chapter 2. Before the installation you should check whether the correct mounting brackets are available.

## 1.1 Required tools

Tool	Needed to	Amount
Screwdriver flat	General usage / adjustments	1
Screwdriver philips	General usage / adjustments	1
Drilling machine (battery)	Placing brackets	1
4mm allen key	General usage	1
Setting tool blind rivet nuts	Mounting bracket	1
Wrench 13mm	General usage	1
Plastic hammer	Mounting platform	1
Wrench 24mm	Adjustments	1

## 1.2 Required parts

Part	Amount	Picture
Actuator	1	
Under Profile	1	
Upper Profile	1	
Platform bar	1	
Platform	1	
Shaft Ø 24mm	1	
Converter 12-24V, 20A	1	
Blind rivet nut M6	4	
Bracket	2	
Spring washer M6	6	
Cap screw cylindrical head M6x50	4	
Spring washer M8	13	
Locknut M8	13	
Spacer	4	
Threaded rod M8x	4	
Self drilling screws M4x25	6	
Bolt M12x40	2	
Plain washer M12	2	
Eyebolt with half nut M16x150	2	
Nut M16	2	
Shoulder screw M12x30	2	
Spring washer M16	2	
Locking plate	1	
Bolt M6x30	2	
Rivet M4.8 heavy	2	
Lever	1	

## 2 Mounting upper profile

### 2.1 Mounting brackets

Pos.	Required parts	Amount	Picture
1	Blind rivet nut M6	4	
2	Bracket	2	
3	Spring washer M6	4	
4	Cap screw cylindrical head M6x50	4	

1. First attach the blind rivet nuts. For placing, please refer to the annex of the right vehicle.
2. Place the two brackets with the supplied screws and washers. See picture.

### 2.2 Mounting upper profile

Pos.	Required parts	Amount	Picture
1	Upper profile	1	
2	Spring washer M8	4	
3	Locknut M8	4	



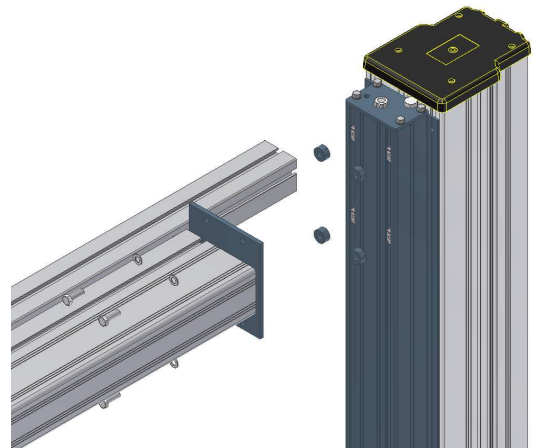
3. Position the profile using the sliding nuts.
4. Set all with the supplied 4 washers and 4 locknuts. See picture.

### 3 Mounting Actuator

#### 3.1 Mounting actuator to the upper profile

Pos.	Required parts	Amount	Pic.
1	Actuator	1	
2	Spacer	4	
3	Threaded rod M8x	4	
4	Spring washer M8	4	
5	Locknut M8	4	

1. Insert the threaded rods in the sliding nuts.
2. Slide the spacers over the threaded rods.
3. Slide the threaded rods through the plate to the upper profile.
4. Set all with the supplied 4 washers and 4 locknuts.

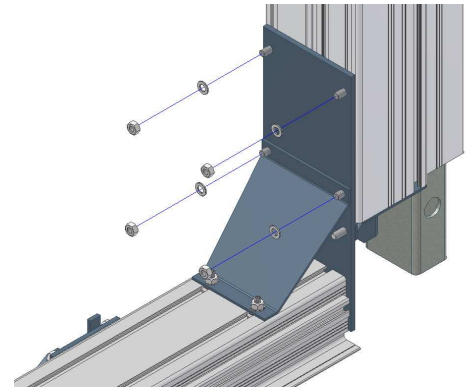


## 4 Mounting under profile

### 4.1 Mounting under profile to the actuator

Pos.	Required parts	Amount	Pic.
1	Under profile	1	
2	Spring washer M8	4	
3	Locknut M8	4	
4	Self drilling screws M4x25	6	

1. Slide the plate at the under profile over the nut plates in the actuator.
2. Set all with the supplied 4 washers and 4 locknuts.
3. Fix the under profile to the floor using the self drilling screws.

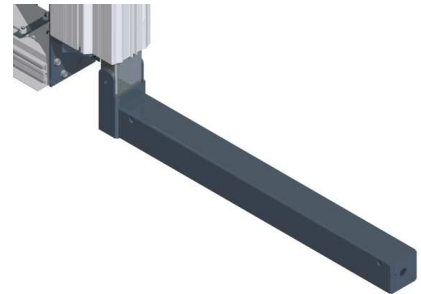


## 5 Mounting Platform

When the actuator is fixed, you can mount the platform bar to the lift tube.

### 5.1 Mounting platform bar

Pos.	Required parts	Amount	Picture
1	Lift tube	1	
2	Platform bar	1	
3	Shaft Ø 24mm	1	
4	Bolt M12x40	2	
5	Plain washer M12	2	



1. Place the shaft in the lift tube.
2. Position the platform bar to the lift tube so the holes match.
3. Tighten the two bolts with two wrenches 19mm.

### 5.2 Mounting platform

Pos.	Required parts	Amount	Picture
1	Platform	1	
2	Eyebolt with half nut M16x150	2	
3	Shoulder screw M12x30	2	
4	Nut M16	2	
5	Spring washer M16	2	

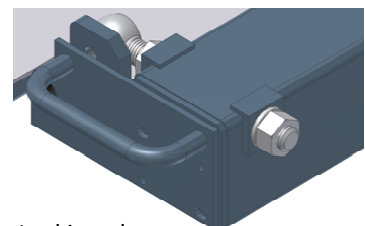


1. Mount the two eyebolts to the platform using the shoulder screws.
2. Hook the platform at the bar by stabbing the eyebolts through the holes.
3. Slide the spring washers at the eyebolts and tighten the nuts on it.

### 5.3 Adjusting platform

Pos.	Required parts	Amount	Picture
1	Locking plate	1	
2	Bolt M6x30	2	
3	Spring washer M6	2	
4	Rivet M4.8 heavy	2	

1. Tighten the two nuts to extend that the platform is level.
2. Then tighten the two half nuts.
3. Set the platform vertically to determine the place for the locking plate.
4. Drill two holes in the slotted holes and then tap M6 in it.
5. Tighten the locking plate with the 2 spring washers and 2 bolts.
6. If the locking plate is arranged in the right place, drill the 2 other holes.
7. Fix the locking plate with the two rivets.



Locking plate

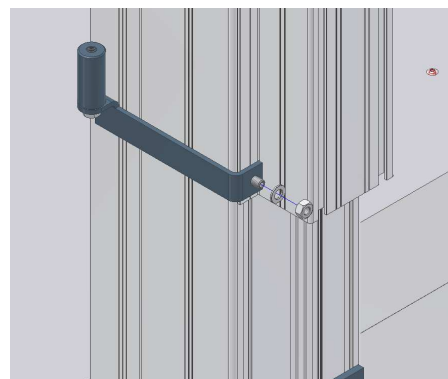


## 6 Mounting other parts

### 6.1 Mount locking

Pos.	Required parts	Amount	Picture
1	Lever	1	
2	Locknut M8	1	
3	Spring washer M8	1	

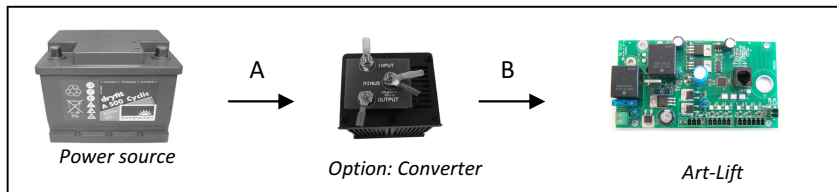
1. Position the set screw at the required height.
2. Install the lever using the supplied washer and nut.



## 7 Electrical connection

### 7.1 Wiring diagram Art-Lift—power source

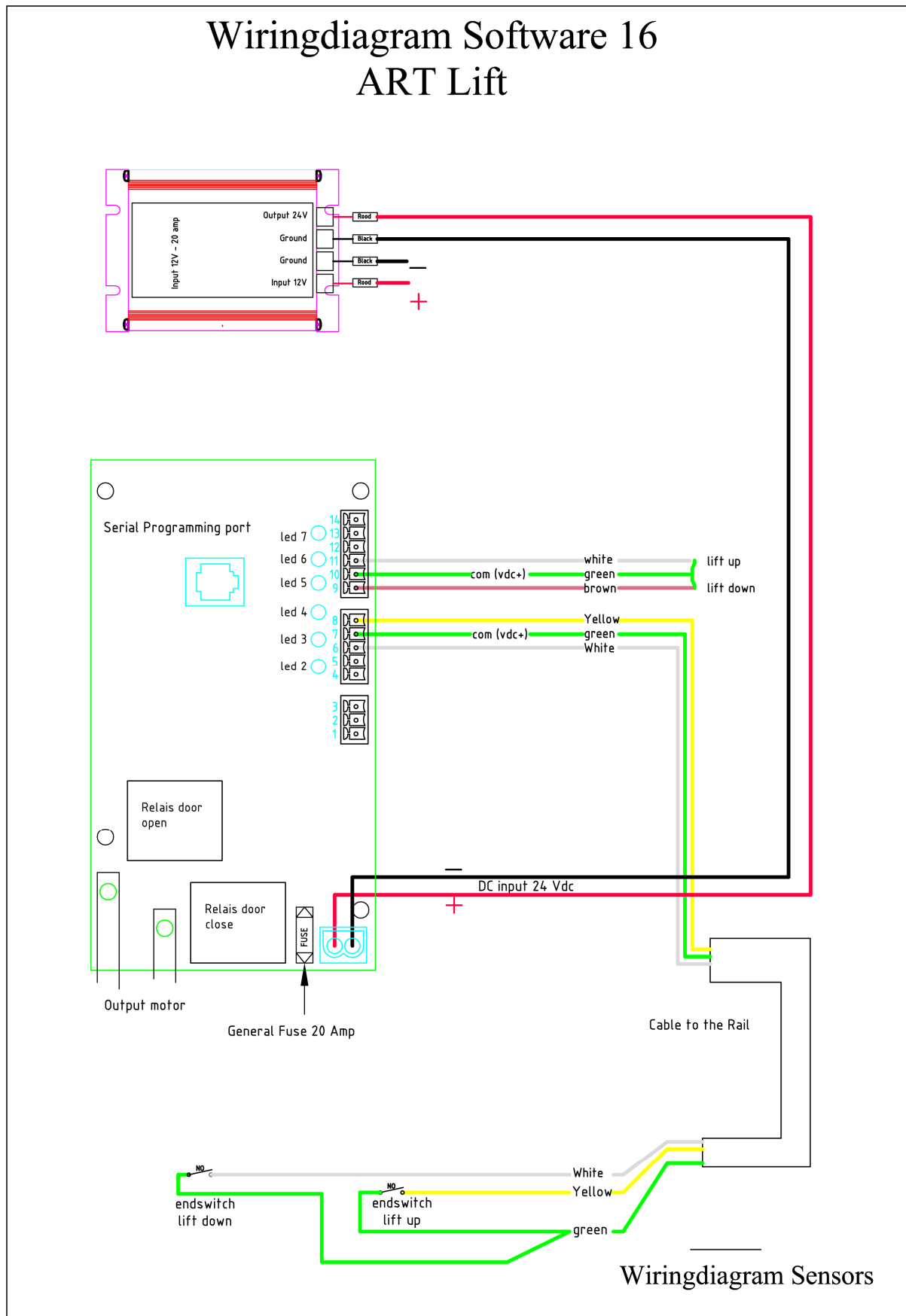
1. Determine the position of the converter.
2. Feed the cable from the Art-Lift and the cable from the power source to the converter. For proper wire sizes, see image and table.
3. Pinch the crimp eyes on the cables. The converter has M6 bolts.
4. Connect the cables to the power source. Make sure it is fused!



Battery voltage	"A" length (m)	Cable to converter (mm <sup>2</sup> )	converter	Max. "B" length to Art-Lift (m)	Cable from converter to Art-Lift (mm <sup>2</sup> )
12 V	< 5	6	12 tot 24	3	2,5
	< 10	6	12 tot 24	3	2,5
24 V	< 10	6	NA		

## 7.2 Wiring diagram Art-Lift PCB

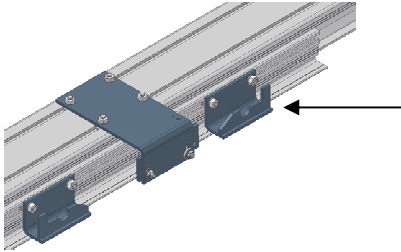
1. The electrical wiring diagram of the Art-Lift PCB



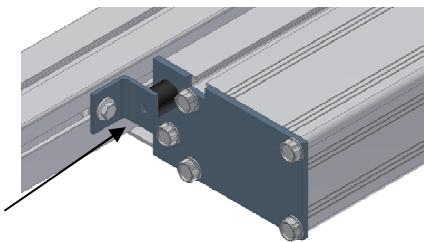
## 8 Adjusting Art-Lift

When everything is wired up correctly, you can begin to adjust the Art-Lift

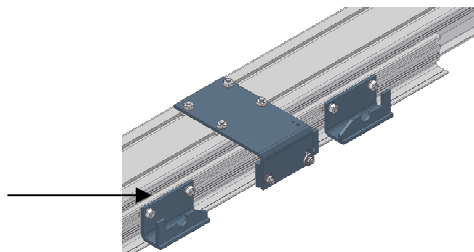
1. Move the Art-Lift to the retracted position
2. Place the back lever in the right position. See picture.



3. Slide the buffer on the upper profile against the moving part of the profile. See picture.



4. Move the Art-Lift to the extended position.
5. Place the front lever in the right position. See picture.



6. Slide the stop backwards against the end plate of the moving part of the upper profile. See picture.

